

MHL SYSTEMS

33 East Columbia Ave [4160 So]
Salt Lake City, UT 84107
Telephone: (800) 999-7517
Fax: (801) 268-1946

CARBIDE MAG/500 MOLDBOARD WEAR-SHOE
SEGMENTED & ADJUSTABLE WEAR ANGLE
[90 to 60] Degrees Relationship to Ground Surface

FEATURES:

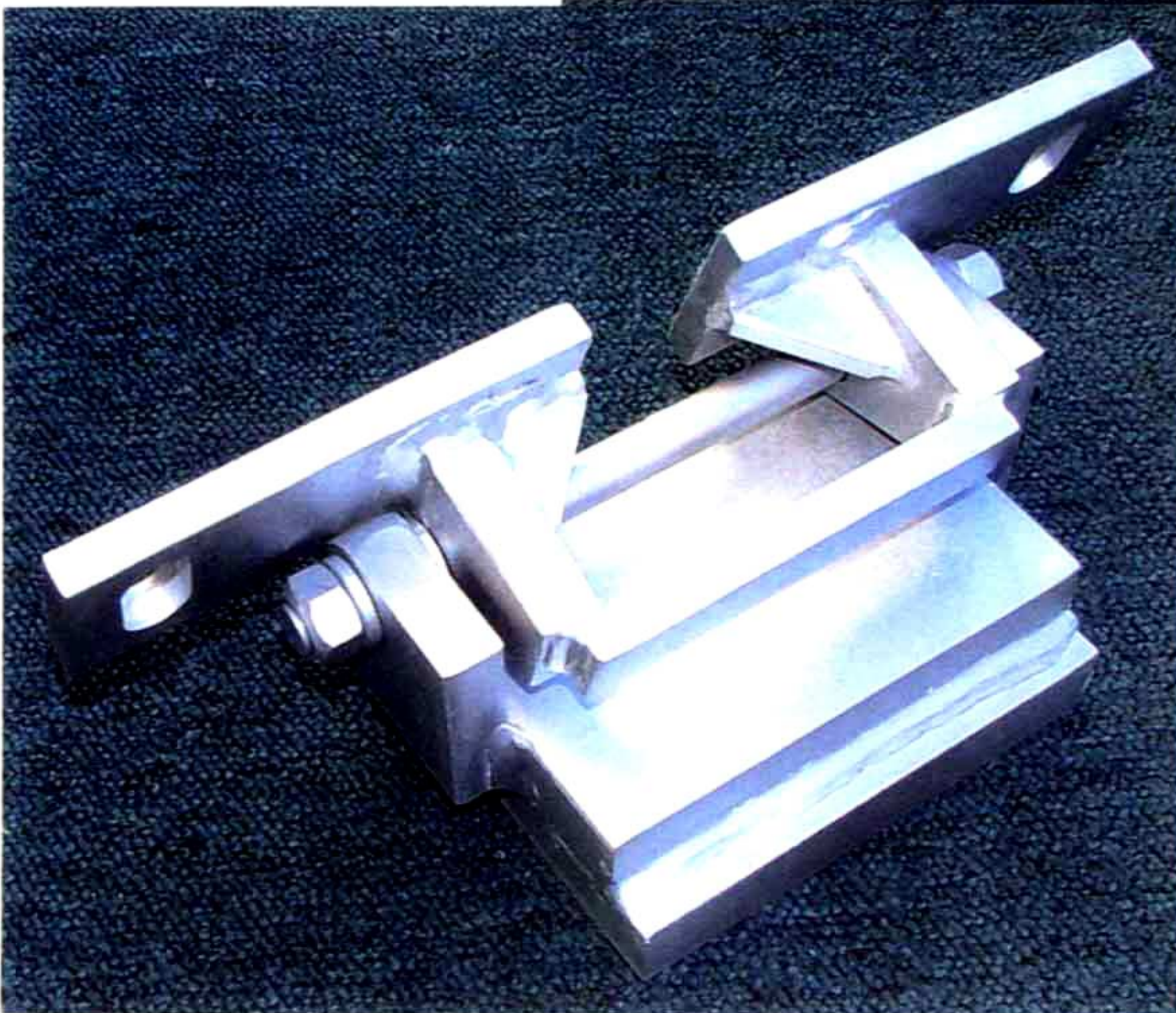
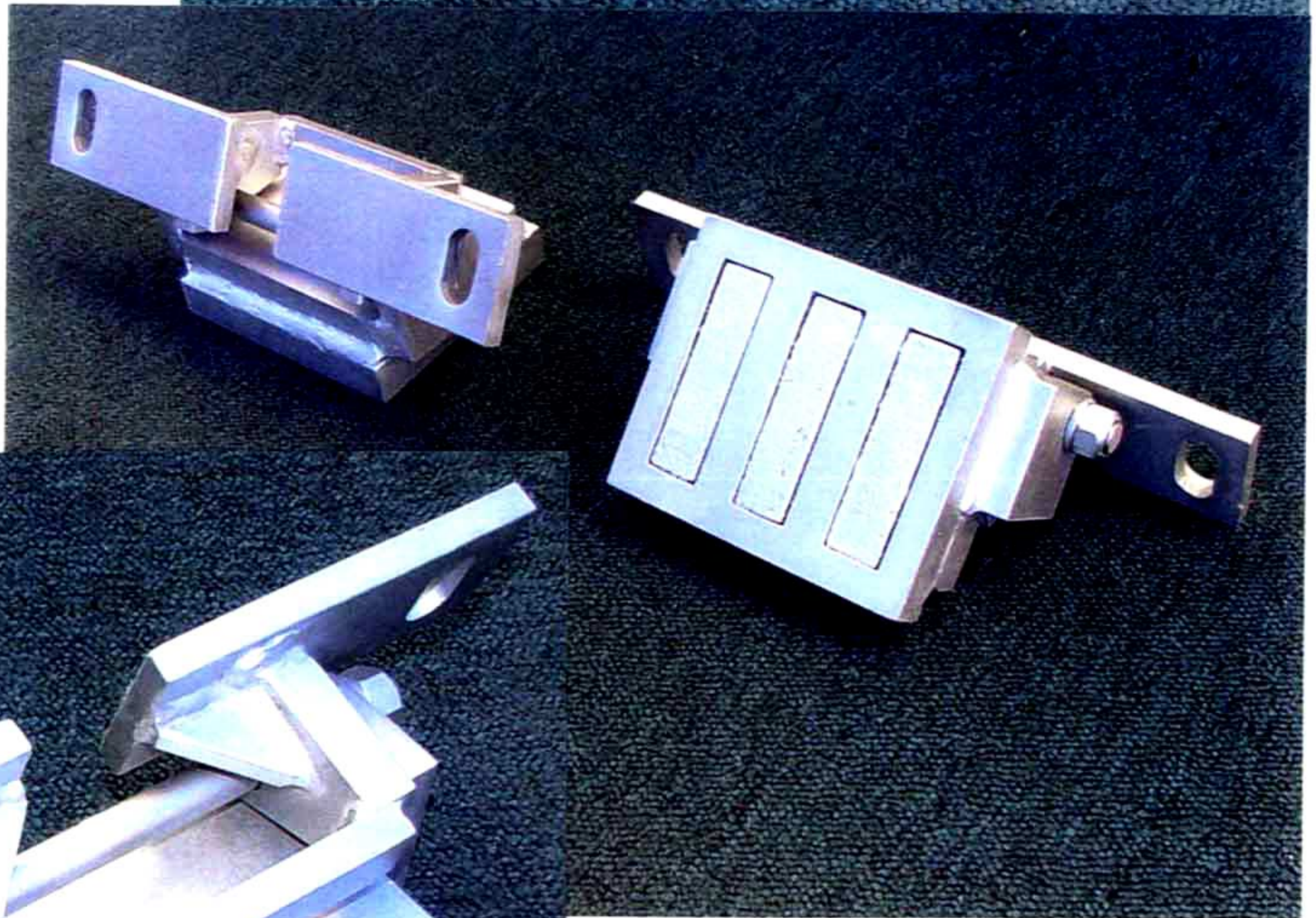
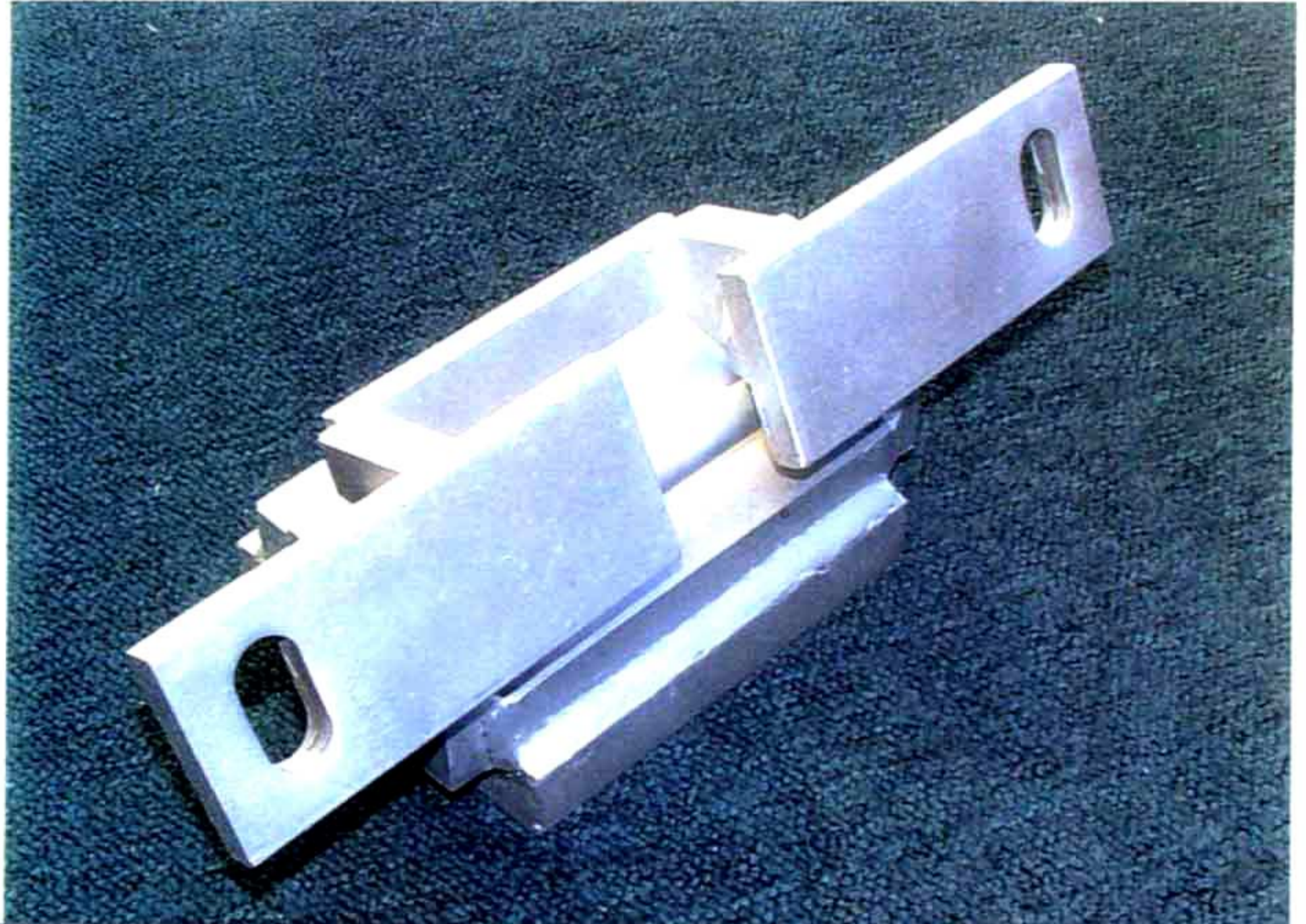
1. MAG/500 Wear-Base Automatically Adjusts to Ground/Surface.
2. Segmented Attachment Bar Adapts to rear of Moldboard with or without stiffener gussets.
3. Allows you to Completely use up ALL Carbide Elements of your Snow Plow Blade.
4. Are SIMPLE to Install.

Photo's:

Top: Front Right-Side View

Middle: Front Left-Side & Bottom View Showing (3) 1" x 4" Castings

Bottom: Rear Left-Side View



WE OFFER (3) SIZES OF BASE UNITS:

1. MAG/500 4.5" x 6.5" with [3 - 1" x 3" Castings]
2. MAG/500 5.5" x 6.5" with [3 - 1" x 4" Castings]
3. MAG/500 6.5" x 6.5" with [3 - 1" x 5" Castings]